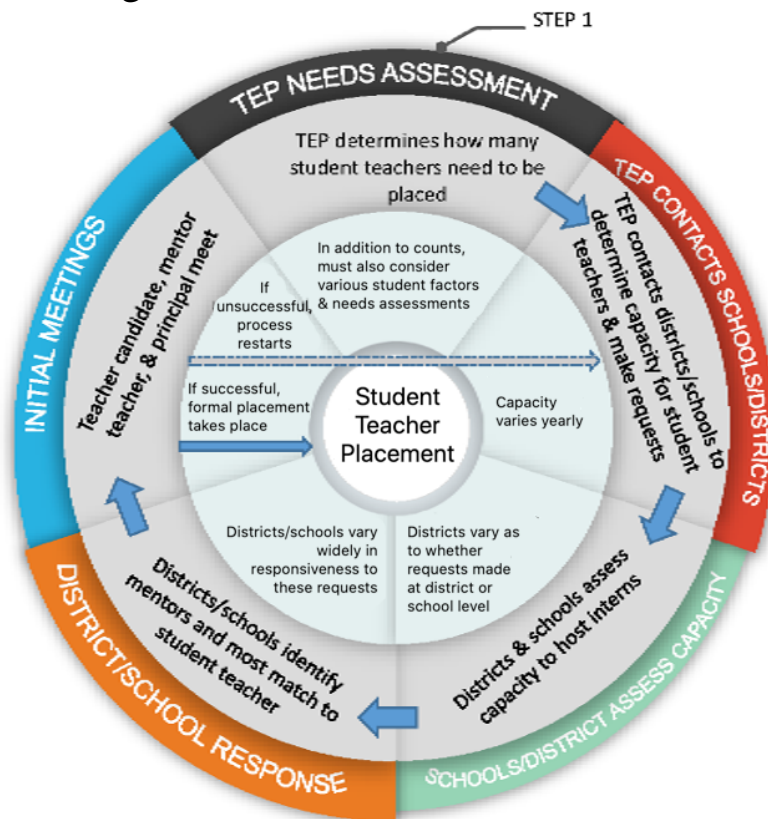


7. There is some information asymmetry in the student teacher placement process.



In this qualitative study in the Journal of Education Human Resources, we examined the student-teacher placement process as well as the factors that influence these placement decisions. We also explored how, if at all, practices vary across TEPs, districts, and schools. We found that, in broad terms, the process for matching student teachers to mentor teachers is similar across educational institutions, although TEPs and school systems sometimes face competing priorities when placing student teachers in classrooms. We also identified a problem of information asymmetry in the placement process, which leaves TEPs with questions about how cooperating teachers are selected and districts and schools with limited information with which to make thoughtful and intentional matches between candidates and cooperating teachers. Finally, we documented the important role of social networks in placements and how they can advantage some TEPs, districts, and schools in this process.

The Student Teaching Placement Process



St. John, E., Goldhaber, D., Krieg, J., & Theobald, R. (in press). How the match gets made: Exploring student teacher placements across teacher education programs, districts, and schools. *Journal of Education Human Resources*.